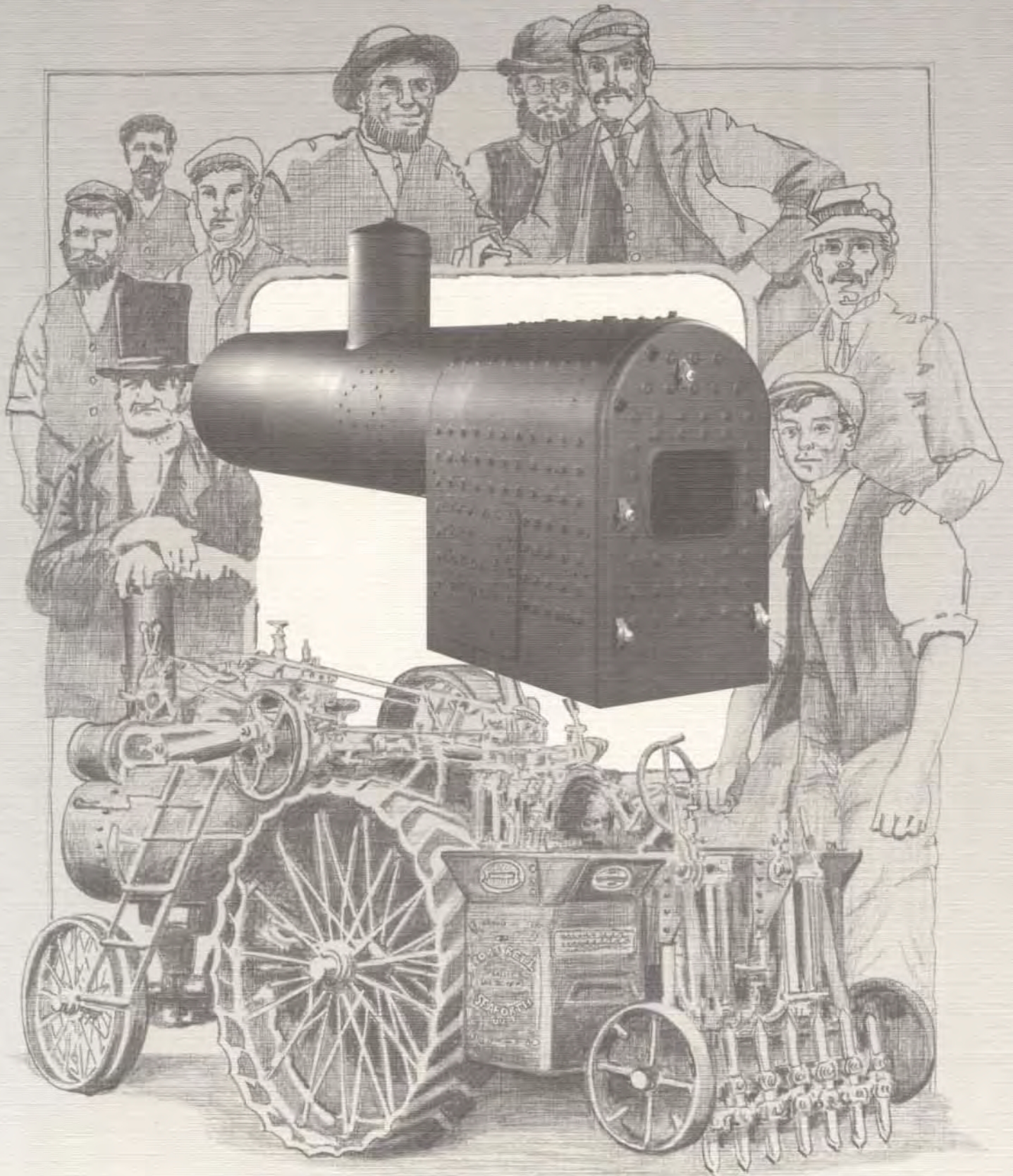


BOILERSMITH[®]

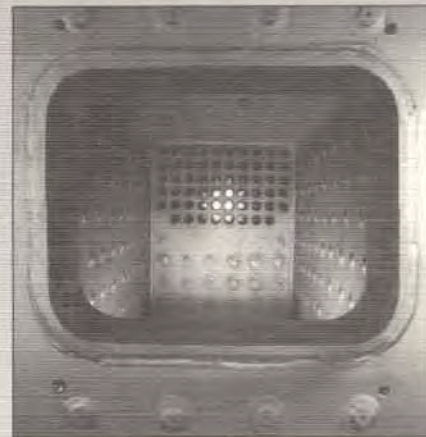


TRACTION ENGINE BOILERS

ALL WELDED CONSTRUCTION

OTHER RESTORATION BOILERS

- 54 inch HRT with dome
- Upper Canada Village HRT
- Ford Museum HRT
- Various HRTs, 36 to 84 inch diameter
- Upper Canada Village vertical (see photo)
- Ditching machine vertical
- Miniature rail locomotive
- Miniature traction engine
- Vertical for engine
- Merry-go-round
- Return tubular firebox
- Marine submerged tube vertical
- Miniature vertical
- Waterous Pacific
- Marine special

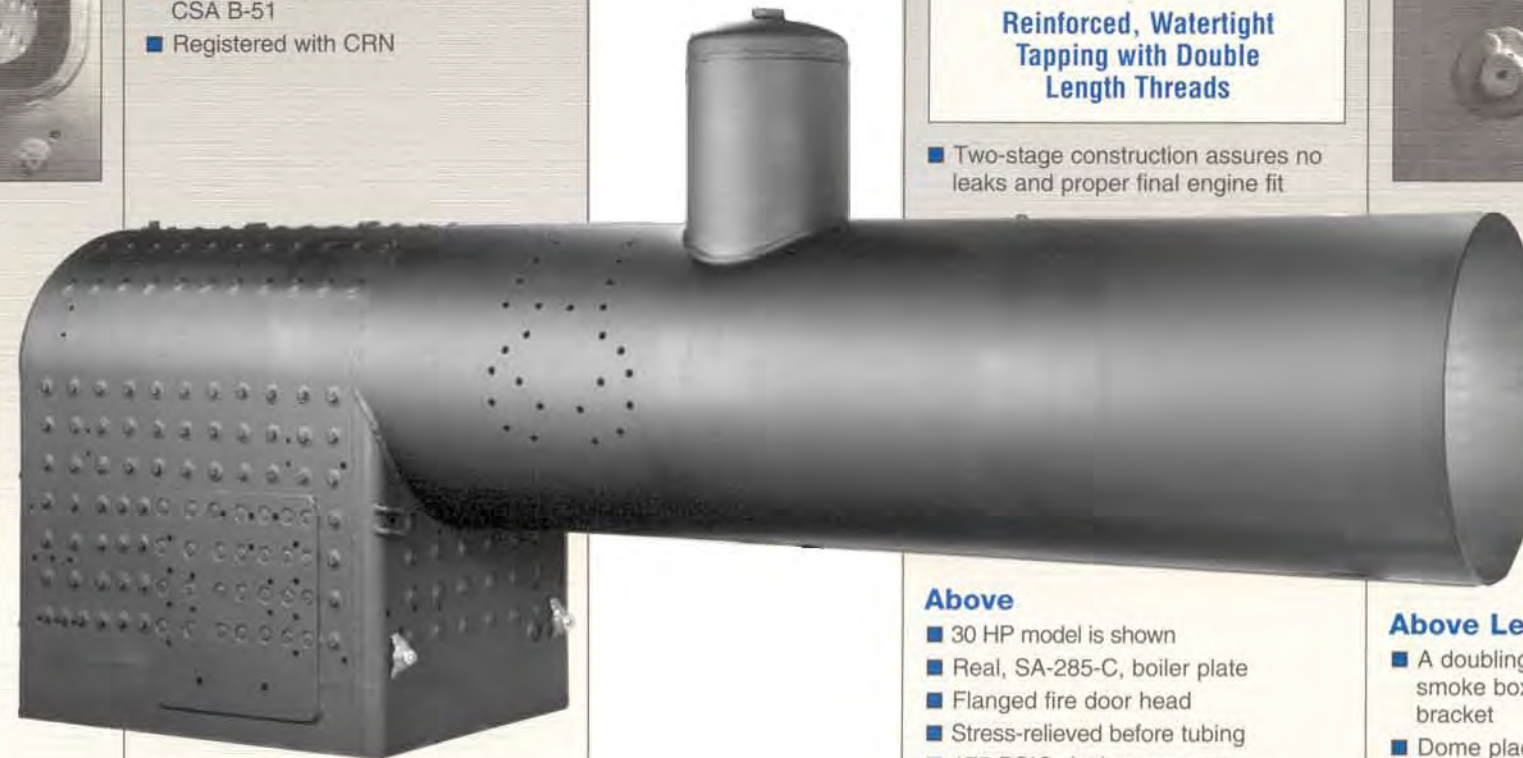


Above

- Firebox internals
- ASME fusible plug
- Custom contoured crown sheet top
- Custom shaped fire door opening

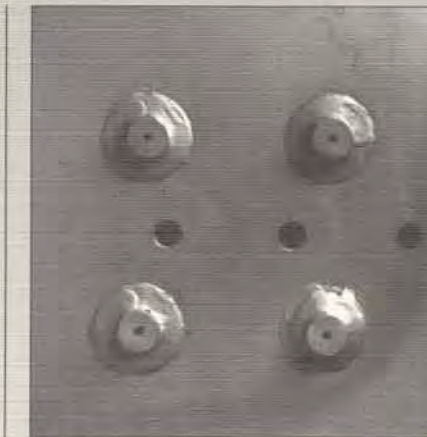
Additional Specifications

- 3/8 inch minimum plate thickness
- 1/2 inch mud ring and door ring
- 5/8 inch tube sheets
- 2 inch, 13 Ga. tubes; SA-178-A
- 3000 # forged couplings
- To ASME Code Section I and CSA B-51
- Registered with CRN



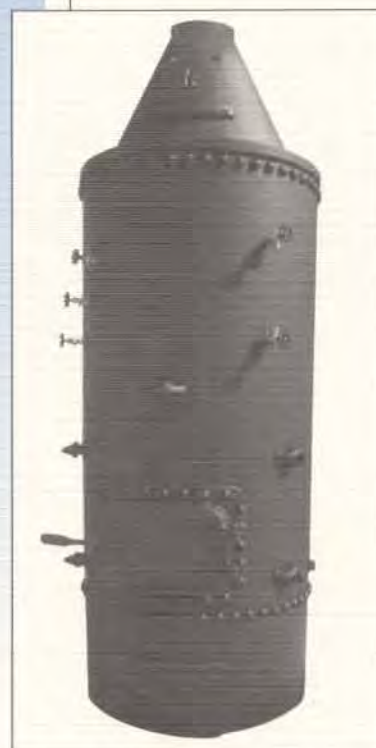
Reinforced, Watertight Tapping with Double Length Threads

- Two-stage construction assures no leaks and proper final engine fit



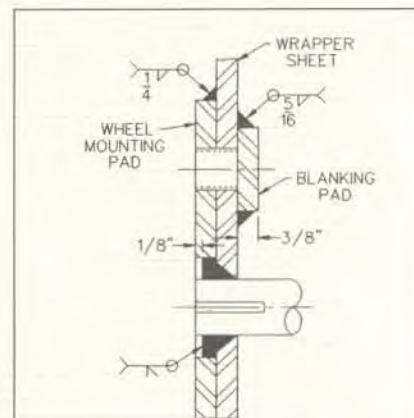
Above

- Telltale holes in short firebox stays
- 1 inch diameter, oversized stay rods
- Watertight bolt tapplings for casting attachment



Right

- Vertical tubular
- Wet leg
- Dry ash pit
- Optional hood
- Custom antique fire door
- Decorative rivets
- All welded construction



Doubling Plate for Wheel Mounting and Bolt Hole Blanking Pad

Above

- 30 HP model is shown
- Real, SA-285-C, boiler plate
- Flanged fire door head
- Stress-relieved before tubing
- 175 PSIG design pressure
- Any make or size
- A dozen fabricated since 1967

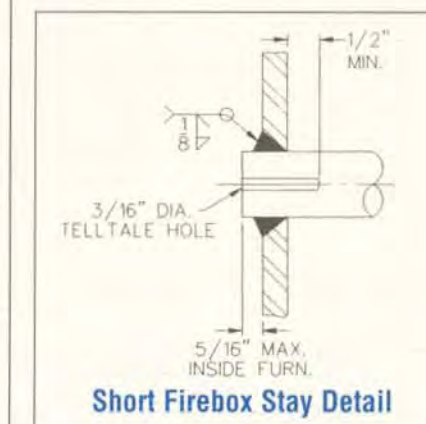


Above

- 1-1/4 inch diameter, oversized through stays
- The flat smoke box tube sheet increases bead clearance

Above Left

- A doubling pad is available in the smoke box for the front wheel bracket
- Dome placed to suit customer
- Flanged throat sheet
- Submerged arc welded barrel
- Seams radiographed (X-rayed) as ASME Code requires



Short Firebox Stay Detail

- Telltale holes enhance inspection accessibility and safe operation

TRACTION ENGINE REPLACEMENT BOILERS

1967 to 1994

(Listed chronologically)

- 20 HP Sawyer, 225 sq. ft.
- 20 HP Waterloo, 200 sq. ft.
- 10 HP Sawyer, 100 sq. ft.
- 18 HP Goodison, 188 sq. ft.
- 20 HP Waterloo, 200 sq. ft.
- 20 HP Waterloo, 200 sq. ft.
- 24 HP Bell, 233 sq. ft.
- 24 HP Sawyer, 225 sq. ft.
- 24 HP Sawyer, 225 sq. ft.
- 24 HP Case, 225 sq. ft.
- 22 HP Sawyer, 215 sq. ft.
- 30 HP Bell, 287 sq. ft.

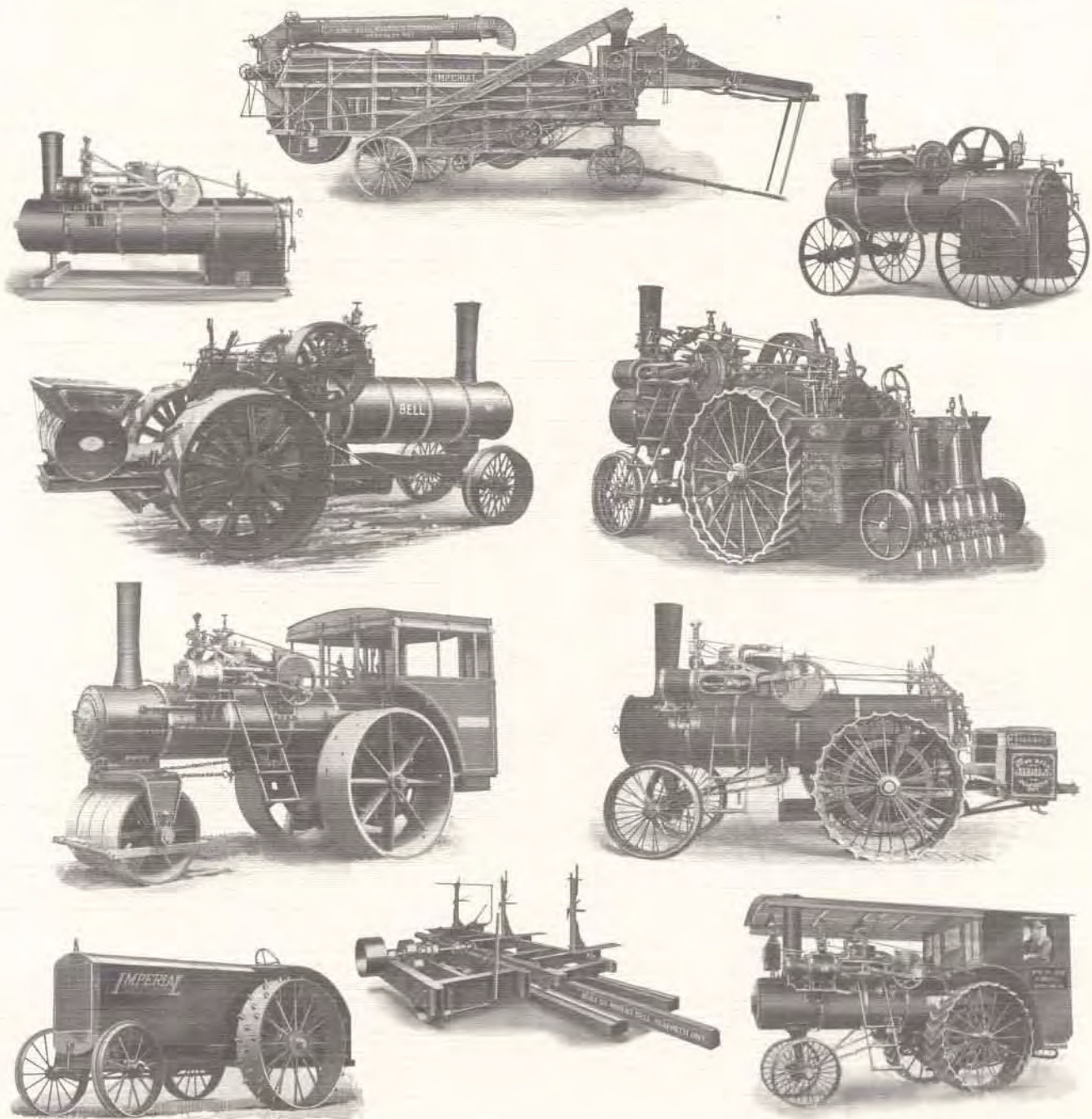
A.S.M.E.



NAT'L BD.

DETAILED DESIGN SPECIFICATIONS AVAILABLE

FROM A HERITAGE OF OVER 90 YEARS



**UNMATCHED EXPERIENCE IN THE FABRICATION
OF FIRETUBE BOILERS**

BOILERSMITH
CANADA'S BOILER MAKER

P.O. Box 70, 156 Main Street South
Seaforth, Ontario N0K 1W0
Tel: (519) 527-0600 Fax: (519) 527-0150