

## ΔPEX



AP3HS-125-O-150

Note: Pressuretrol Train and hinges are now as shown inside.

**PREMIUM  
FIRETUBE BOILERS BY**  
■ CANADA'S 🔧 BOILER 🔧 MAKER ■

**ΔP3 SERIES**  
**PACKAGED  
WETBACK  
DESIGN**

150# STEAM

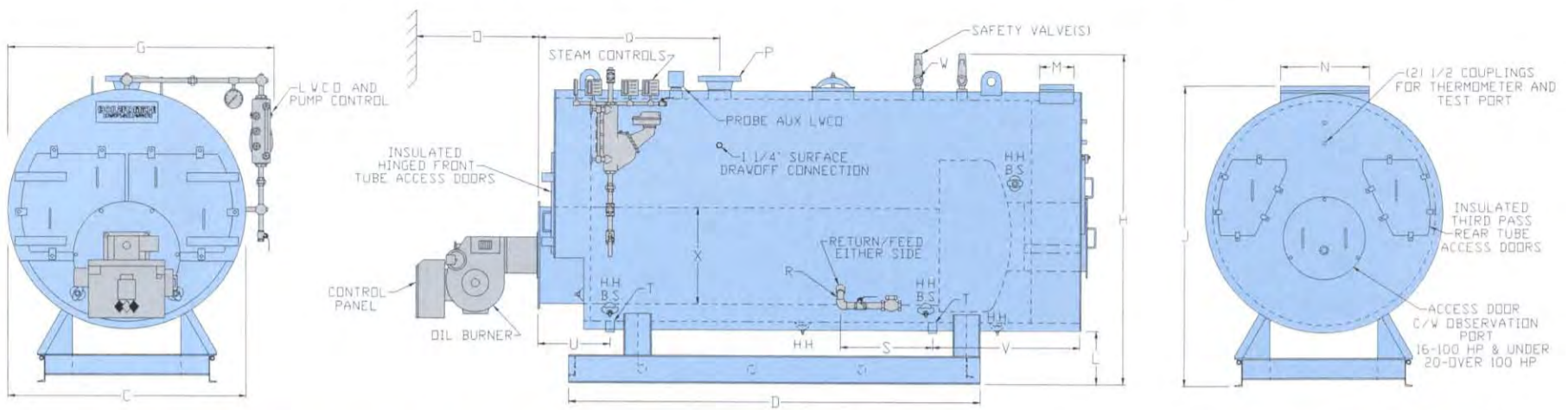
OPTIMUM THREE PASS

# AP3 APEX SERIES

FEATURING FULL WETBACK

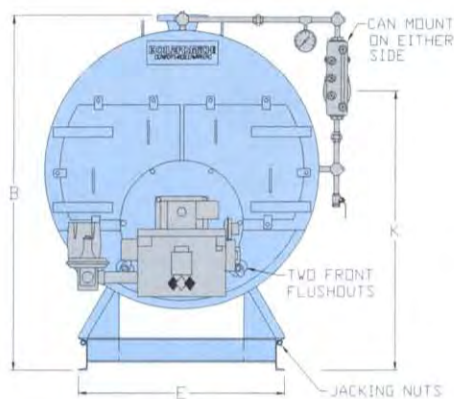
70 TO 700 HP

## PACKAGED PREMIUM FIRETUBE BOILERS

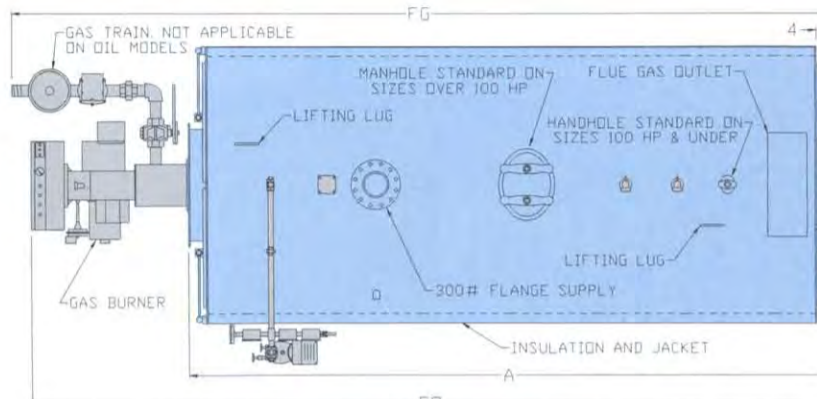


VIEWS SHOWING OIL BURNER AND STEAM TRIM

REAR VIEW



FRONT VIEW GAS/STEAM



TOP (PLAN) VIEW

GAS FIRED  
•  
OIL FIRED  
•  
GAS/OIL FIRED

MODEL No. DESIGNATION

APDHS - 250 - G - 150

APDHS - 250 - G - 150  
 HS - HIGH PRESSURE STEAM  
 LS - LOW PRESSURE STEAM  
 HORSEPOWER  
 G - GAS FUEL  
 GO - GAS/OIL FUEL  
 P - PROPANE  
 DESIGN PRESSURE PSIG

- Hinged front doors provide fast access to tubes without disconnection of pipes, fuel lines or electrical cables AND without disturbing firing equipment
- Time-tested design, 35 years in the field
- Our FIRETUBE design has 100% water-cooled heat transfer surface; no hot fins to burn away
- High efficiency is obtained without using a fourth pass; fourth pass tubes have often been subject to premature failure
- Ample steam space and steam release area yield dryer steam and minimize scaling of system components
- Extra large furnace volume and primary heating surface for efficient long life

### 150# STEAM AP3 APEX SERIES SPECIFICATIONS

	70	80	100	100X	125	125X	150	150X	200	200X	250	300	400	500	600	700
HORSEPOWER	70	80	100	100X	125	125X	150	150X	200	200X	250	300	400	500	600	700
GROSS OUTPUT :MBH	2343	2678	3347	3347	4184	4184	5021	5021	6694	6694	8368	10042	13389	16736	20083	23430
GROSS OUTPUT :LBS STEAM/HR ◊	2415	2760	3450	3450	4313	4313	5175	5175	6900	6900	8625	10350	13800	17250	20700	24150
FIRING RATE INPUT GAS :MBH	2823	3227	4033	4184	5041	5230	6049	6276	8065	8368	10082	12099	16131	20164	24196	28229
FIRING RATE INPUT OIL :USGPH	20.2	23.0	28.8	29.9	36.0	37.4	43.2	44.9	57.6	59.8	72.0	86.4	115.2	144.0	172.8	201.6
HEATING SURFACE :SQ FT	358	400	500	358	625	358	750	358	1000	358	1250	1500	2000	2500	3000	3500
WATER CAPACITY FULL :IMP GAL	472	539	651	472	785	746	922	746	1203	1048	1637	1939	2880	3600	4000	4310
WATER CAPACITY NVL :IMP GAL	382	438	527	382	630	605	742	605	971	820	1296	1537	2475	3020	3350	3270
FURNACE VOLUME :CU FT	22.2	24.1	28.7	22.2	48.7	29.4	54.8	29.4	67.3	47.1	103	118	225	304	334	321
SHIPPING WEIGHT :LBS	9250	10100	11750	9300	15500	11000	17100	11150	20150	14900	29850	31000	46050	55200	63850	72000

ALL DIMENSIONS WITHOUT DECIMALS ARE TO THE NEAREST INCH

OTHER INTERMEDIATE MODELS AVAILABLE

	138	150	178	138	144	150	162	150	199	162	188	215	202	242	254	266
A BARE BOILER LENGTH	138	150	178	138	144	150	162	150	199	162	188	215	202	242	254	266
B BARE BOILER HEIGHT (TD SUPPLY)	75	75	75	75	88	81	88	81	88	89	103	103	125	125	125	132
C BARE BOILER WIDTH	53	53	53	53	69	61	69	61	69	69	83	83	108	108	108	114
D BASE LENGTH	88	99	127	88	87	91	105	91	142	108	122	149	126	160	172	184
E BASE WIDTH	46	46	46	46	52	48	52	48	52	52	60	60	84	84	84	90
FG OVERALL LENGTH GAS	176	191	219	179	185	190	205	193	242	205	241	268	255	00	00	00
FD OVERALL LENGTH OIL	170	185	213	173	179	184	199	187	236	199	235	262	249	00	00	00
G OVERALL WIDTH	60	60	60	60	76	68	76	68	76	76	90	90	115	115	115	121
H OVERALL HEIGHT	79	79	79	79	92	84	92	85	92	93	109	109	133	133	133	140
J HEIGHT TO FLUE GAS VENT	74	74	74	74	87	80	87	80	87	88	102	102	124	124	124	131
K HEIGHT TO NORMAL WATER LINE	60	60	60	60	71	64	71	64	71	69	82	82	99	99	99	105
L FLOOR TO JACKET	18	18	18	18	16	16	16	16	16	16	16	16	14	14	14	14
M FLUE GAS OUTLET WIDTH	6	6	6	6	8	7	10	7	12	10	12	12	16	16	16	16
N FLUE GAS OUTLET LENGTH	22	22	22	22	26	26	26	26	32	26	32	32	44	50	50	50
Q TUBE REMOVAL	103	115	143	103	100	115	118	115	155	94	146	173	152	193	205	207
P SUPPLY SIZE	4	4	4	4	6	6	6	6	6	6	6	6	8	8	8	8
Q SUPPLY LOCATION	35	35	35	35	47	50	47	50	59	48	53	53	73	73	73	73
R FEED/RETURN CONNECTIONS	2	2	2	2	2	2	2	2	2	2	2	2	2.5	2.5	2.5	2.5
S FEED/RETURN LOCATION	22	22	22	22	12	33	12	33	12	27	10	10	76	125	149	143
T BLOWOFF/DRAIN CONNECTIONS	1.25	1.25	1.25	1.25	1.5	1.5	1.5	1.5	1.5	1.5	2	2	2	2	2.5	2.5
U FRONT BLOWOFF/DRAIN LOCATION	23	23	23	23	23	33	23	33	23	21	23	23	39	39	39	39
V REAR BLOWOFF/DRAIN LOCATION	33	33	33	33	48	27	48	27	48	43	50	50	8	8	8	8
W SAFETY VALVE OUTLET No & SIZE	1.5	1.5	1.5	1.5	2x1.5	2x1.25	2x1.5	2x1.5	2x1.5	2x1.5	2x2	2x2	2x2.5	2x2.5	3x2.5	3x2.5
X FURNACE DIAMETER	20	20	20	20	28	24	28	24	28	28	36	36	46	46	53	53

SPACE SAVING 4 SQ FT/HP MODELS AVAILABLE  
 DESIGN PRESSURES AVAILABLE AT 15# AND UP TO 250#  
 ALTERNATE WETBACK DESIGN USED ON MODELS OVER 300 HP  
 H.H. = HANDHOLE B.S. = BOTH SIDES  
 WE ASSUME NO RESPONSIBILITY FOR ERRORS IN DATA  
 CERTIFIED DIMENSIONS, SPECIFICATIONS AND DRAWINGS  
 AVAILABLE ON REQUEST  
 FIRING SEQUENCE IS LO-HI-LO-OFF UP TO AND INCLUDING 200 HP  
 FIRING SEQUENCE IS FULL MODULATION ABOVE 200 HP AND ON X SERIES  
 FULL MODULATION FIRING IS AVAILABLE FOR 200 HP AND BELOW  
 CONNECTIONS 4" AND LARGER ARE 300# FLANGES. ALL OTHERS ARE THREADED  
 WATER COLUMN ASSEMBLY CAN BE READILY REMOVED TO EASE INSTALLATION  
 GAS TRAINS CAN BE PIPED ALONG SIDE OF SKID  
 ◊ FROM AND AT 212°F ◊◊CONSULT FACTORY

# AP3 APEX SERIES

## APEX ASSET OVERVIEW

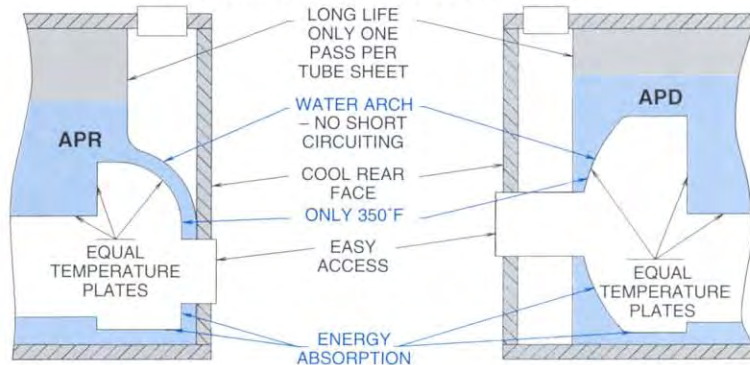
- \* **HEAVY-DUTY** \*
  - \* **OVERALL EXCELLENCE** \*
- COMPARE THESE  
OUTSTANDING FEATURES**

- Wetback for low maintenance, long life and maximum efficiency
- Liberal dimensions; durable, proven three-pass firetube arrangement
- Undesirable, throw-away, non-repairable construction is avoided (as seen on some watertubes and exotic designs)
- Lower parts costs
- Minimal service costs
- "Off the shelf" components
- Quick and easy maintenance
- Outstanding inspection access
- REAL boiler construction
- Flexible firing rate and output
- Equipped with premium packaged forced draft burners

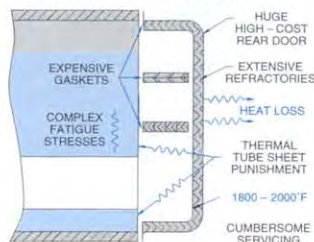


- Extra handholes are provided, in a superior location in the front tube sheet below the furnace
- Offset handhole plate studs ease insertion and removal
- Thoughtfully engineered; enhanced by our extensive design experience
- Carefully chosen first-class materials

## THE APEX WETBACK ADVANTAGE



## COMPETITOR'S MULTIPASS SINGLE TUBE SHEET DRYBACK DISADVANTAGE



- Large 5/8" BOLTS are used on all doors; fewer are required; opening/closure is faster; easily damaged studs are avoided
- All fireside doors have long-life gaskets, fit for repeated use

## OPTIONS AND ALTERNATIVES

- We specialize in customizing your boiler. The Apex can be equipped to suit a wide variety of installations and specifications. We will help direct you to the most cost-effective models and features. Hot water units are available.

## STANDARD STEAM TRIM

- Safety valve(s)
- Water glass set
- Pressure gauge
- Gauge cock
- Pressuretrol line drain
- Trycocks
- Pressuretrol - high limit
- Pressuretrol - operating
- Pressuretrol - high fire control (modulating as required)
- McDonnell Miller 157 low water cutoff and pump control c/w water column blowdown valve
- Warrick 2 probe auxiliary low water cutoff c/w probe relay
- Feed check and shutoff valves

## PREMIUM PERFORMANCE

- The furnaces of Apex series boilers are of large diameter and ample length. This, along with the full water-cooled rear chamber, ensures that the furnace absorbs much more heat, maximizing efficiency and minimizing pollutants, while allowing tubesheets to have a cooler, longer life.

**BOILERSMITH**<sup>CO</sup>  
 ■ CANADA'S BOILER MAKER ■

P.O. Box 70, 156 Main Street South  
 Seaforth, Ontario N0K 1W0  
 Tel: (519) 527-0600 Fax: (519) 527-0150

Bulletin No. CAD 1AP3-30-03M-95

Represented by:

Printed in Canada on Recycled Paper

