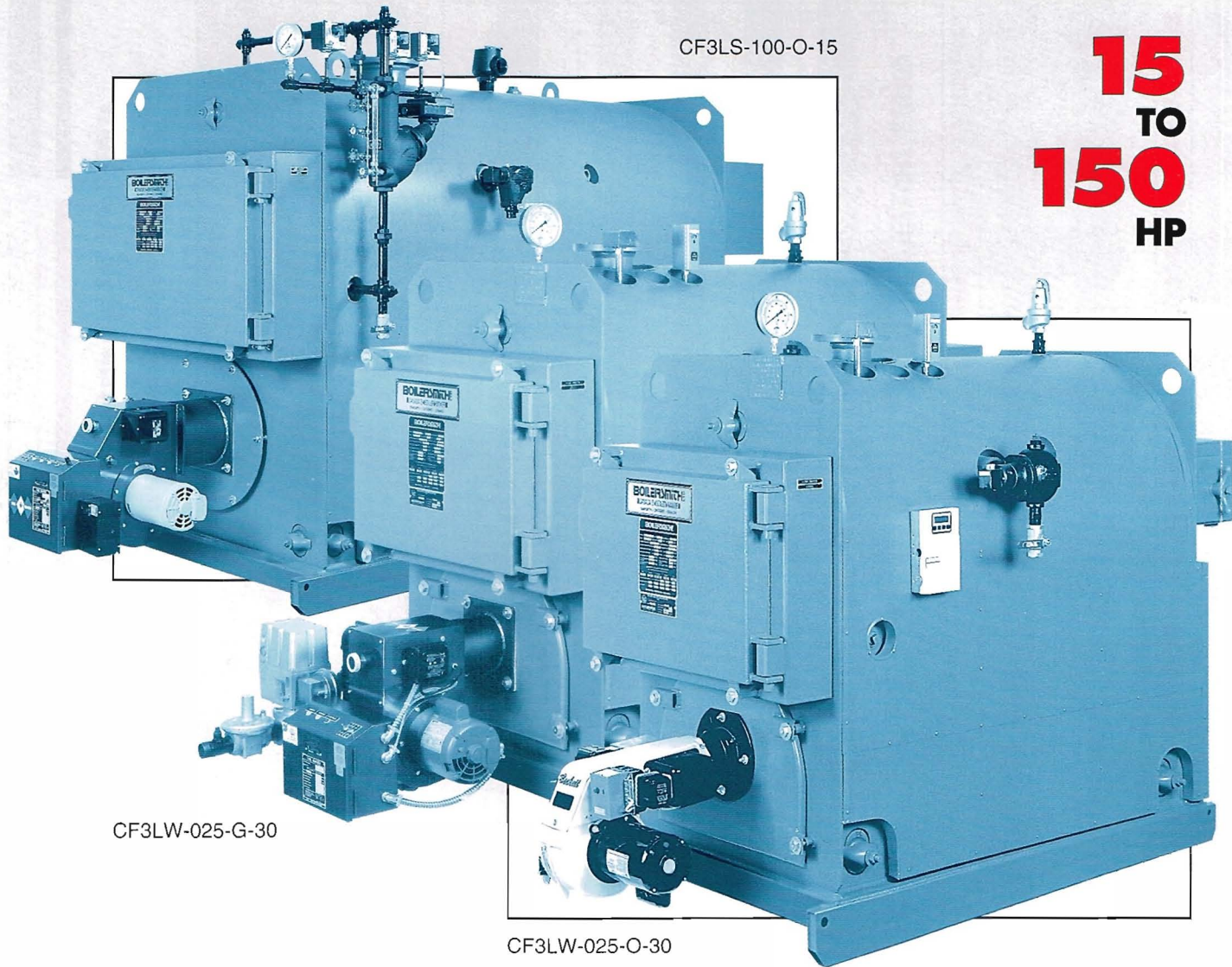


BOILERSMITH

COMPAK

15
TO
150
HP

CF3LS-100-O-15



CF3LW-025-G-30

CF3LW-025-O-30

CFB SERIES

**PREMIUM
FIREBOX BOILERS BY**

■ CANADA'S 🔧 BOILER 🔧 MAKER ■

**PACKAGED
FIRETUBE
DESIGN**

**15#S
30#W**

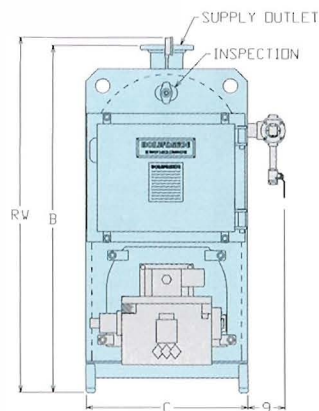
**CLASSIC
DESIGN**

CF3 COMPAK SERIES

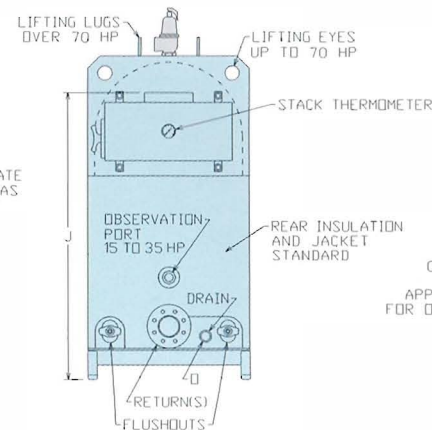
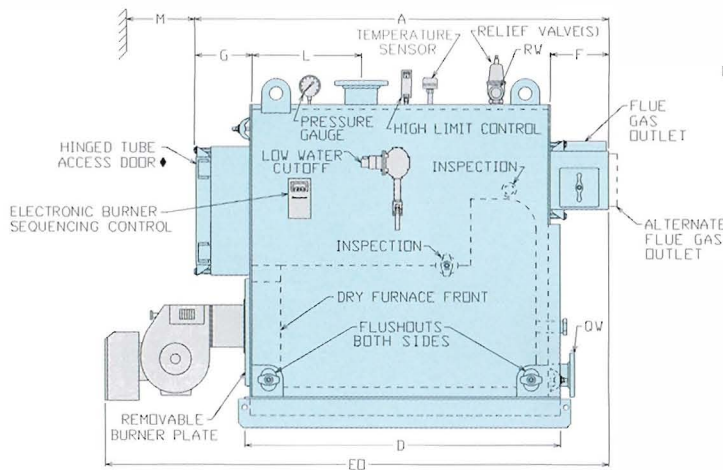
PACKAGED STEEL FIREBOX BOILERS

**REFINED
FEATURES**

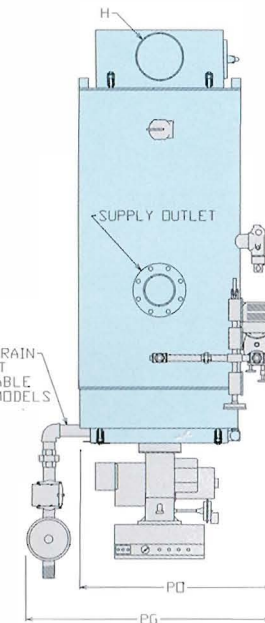
**15 TO
150 HP**



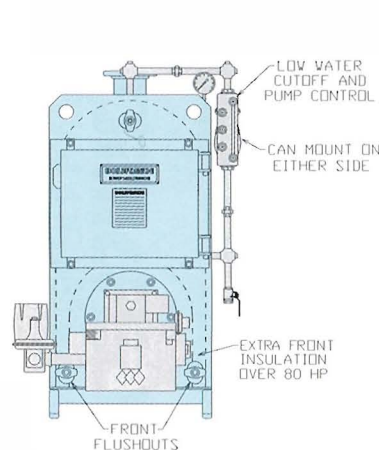
VIEW SHOWING OIL BURNER AND HOT WATER TRIM



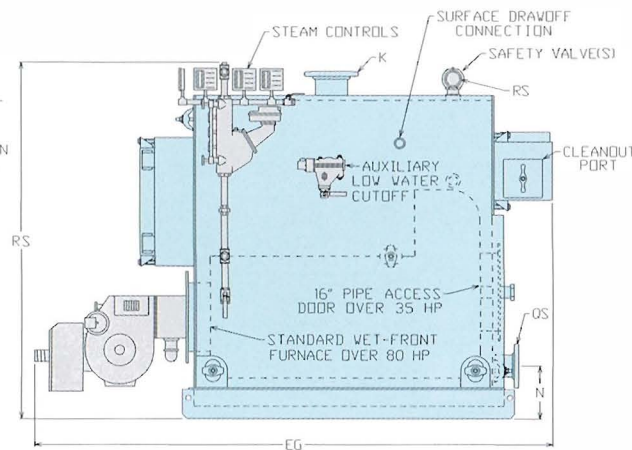
REAR VIEW



**TOP (PLAN) VIEW
(GAS BURNER/
STEAM TRIM)**



VIEW SHOWING GAS BURNER AND STEAM TRIM



**GAS FIRED
•
OIL FIRED
•
GAS/OIL FIRED**

MODEL No. DESIGNATION

CF3LW

LS-LOW PRESSURE STEAM TRIM
LW-LOW PRESSURE WATER TRIM

100

HORSEPOWER

P

O-OIL FUEL
G-GAS FUEL
GO-GAS/OIL FUEL
P-PROPANE FUEL

30

DESIGN PRESSURE
15 PSIG STEAM
30 PSIG WATER

**COMPAK
STEEL
PLATES**

3/8"



UP TO 80 HP

7/16"



90 TO 150 HP

**COMPARE
OTHER
BOILERS**

15# STEAM CF3 COMPAK SERIES SPECIFICATIONS 30# WATER

		15	20	25	30	35	40	45	50	55	60	70	80	90	100	125	150
HORSEPOWER		502	669	837	1004	1172	1339	1506	1674	1841	2008	2343	2678	3012	3347	4184	5021
GROSS OUTPUT:	MBH	605	806	1008	1210	1412	1613	1814	2017	2218	2419	2823	3227	3629	4033	5041	6049
FIRING RATE INPUT (GAS):	MBH	4.32	5.76	7.20	8.64	10.1	11.5	13.0	14.4	15.8	17.3	20.2	23.0	25.9	28.8	36.0	43.2
FIRING RATE INPUT (OIL):	USGPH	77	99	123	150	175	206	225	250	275	300	358	400	464	500	590	750
HEATING SURFACE	SQ.FT	8.6	11	14	16	24	27	29	32	35	37	43	47	56	60	70	86
FURNACE VOLUME:	CU.FT.	87	115	147	178	206	236	257	283	309	292	343	381	473	509	596	727
WATER CAPACITY (FULL):	IMP. GAL	74	99	126	153	178	205	223	246	269	259	305	339	375	404	473	599
WATER CAPACITY (NWL):	IMP. GAL	2700	3000	3400	3900	4100	5000	5350	5700	6050	6100	6700	7400	7700	8700	10500	12300
SHIPPING WEIGHT	LBS																

ALL DIMENSIONS WITHOUT FRACTIONS ARE TO NEAREST INCH

OTHER INTERMEDIATE AND CUSTOM MODELS AVAILABLE

		53	63	74	85	95	93	98	105	112	101	114	123	125	132	149	147
GENERAL	A BARE BOILER LENGTH	63	63	63	63	63	73	73	73	73	76	76	76	83	83	83	92
	B BARE BOILER HEIGHT	34 1/4	34 1/4	34 1/4	34 1/4	34 1/4	40	40	40	40	44 3/4	44 3/4	44 3/4	48	48	48	53 1/2
	C BARE BOILER WIDTH Ø	46	56	67	78	88	80	85	92	99	87	99	108	109	116	133	128
	D BASE LENGTH	71	81	92	103	113	109	117	124	131	119	131	144	148	155	172	177
	EO OVERALL LENGTH OIL	75	85	96	107	117	113	123	130	137	125	137	150	154	161	178	183
	EG OVERALL LENGTH GAS	10	10	10	10	10	14	14	14	14	14	14	14	16	16	16	19
	F REAR FLUE GAS BOX DEPTH	9	9	9	9	9	11	11	11	11	12	12	12	12	12	12	12
	G FRONT FLUE GAS BOX DEPTH	8	8	8	8	8	10	10	10	10	12	12	12	12	14	14	16
	H FLUE GAS OUTLET DIAMETER	51	51	51	51	51	63	63	63	63	66	66	66	69	69	69	78
	J FLUE GAS OUTLET LOCATION	4	4	4	4	4	6	6	6	6	6	6	6	8	8	8	8
	K SUPPLY SIZE (150# FLANGE)	16	16	16	16	16	24	24	24	24	24	24	24	36	36	36	36
	L SUPPLY LOCATION	26	36	47	58	68	58	64	71	78	65	77	86	86	93	110	104
	M TUBE REMOVAL	11	11	11	11	11	11	11	11	11	11	11	11	11	11	11	11
	N RETURN LOCATION	1.5	1.5	1.5	1.5	1.5	2	2	2	2	2	2	2	2	2	2	2
	O DRAIN SIZE	43	43	43	43	43	48	48	48	48	53	53	53	57	57	57	62
	PO OVERALL WIDTH OIL	48	48	48	48	48	50	50	50	50	53	53	55	57	57	57	65
	PG OVERALL WIDTH GAS																
WATER	QW RETURN SIZE*	4	4	4	4	4	4	4	4	4	4	4	4	4	4	4 & 4	4 & 4
	RW RELIEF VALVE OUTLET SIZE	1	1	1.25	1.25	1.5	1.5	1.5	1.5	1.5	1.5	2	2	2.5	2.5	2.5	(2) 2

FOR LOWER OUTPUTS SEE OTHER MODELS

FOR MODELS UP TO 700 HP SEE BULLETIN 2CF3

NOTE: OTHER HOT WATER MODELS AVAILABLE WITH REDUCED HEIGHT OR HIGHER PRESSURES – DATA SHOWN IS FOR STANDARD 15#S/30#W MODELS

STEAM																	
		1	1	1	1	1	1	1	1	1	2	2	2	2	2	2	2
	QS RETURN SIZE	1.5	1.5	2	2	2	2	2	2	2	2	2.5	2.5	2.5	3	3	(2) 2.5
	RS SAFETY VALVE OUTLET SIZE																

* TWIN RETURN ON SIZES OVER 500 SQ. FT. ♦ 150 HP MODEL HAS TWIN DOORS.
 CONNECTIONS 4" AND LARGER ARE 150# FLANGES. ALL OTHERS ARE THREADED.
 WE ASSUME NO RESPONSIBILITY FOR ERRORS IN DATA.
 CERTIFIED DIMENSIONS, SPECIFICATIONS AND DRAWINGS ARE AVAILABLE ON REQUEST.
 BUILT IN ACCORDANCE TO ASME B&PV CODE SECTION IV & C.S.A. B51

SINGLE STAGE FIRING IS STANDARD UNDER 30 HP.
 TWO STAGE FIRING IS STANDARD ON 30 HP AND OVER.
 FULLY MODULATED FIRING IS AVAILABLE ON ALL SIZES.
 ✕ AVAILABLE NARROWER MODELS HAVE 1" INSULATION.
 LISTED BY UNDERWRITERS' LABORATORIES OF CANADA WITH SELECTED BURNERS.

BOILERSmith

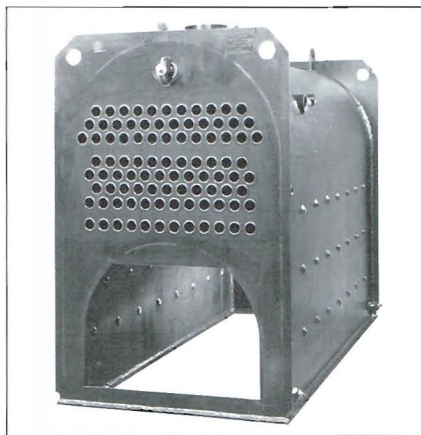
CFB COMPAK SERIES

COMPAK GENERAL INFORMATION

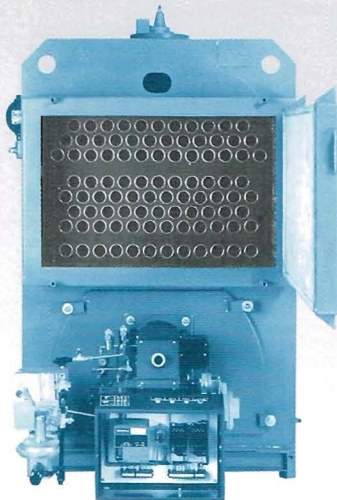
- * NEW MODELS *
- * REFINED DESIGNS *
- * OVERALL EXCELLENCE *

COMPARE THESE - OUTSTANDING HIGHLIGHTS -

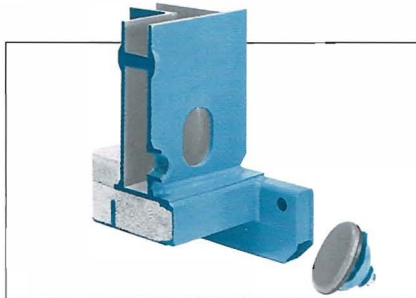
- Heavy-duty STEEL construction
- Rugged, reliable firetube configuration
- Compact dimensions
- Skillfully crafted, durable, proven 3-pass FIREBOX arrangement
- Carefully selected first-class materials
- Factory test-fired
- Lower parts costs
- Thoughtfully engineered to last
- Superior overall efficiency
- Enhanced by our extensive design experience
- "Off the shelf" components
- High quality - exceptional value
- Thick 2-layer floor
- Offset handhole studs ease installation and removal
- 2-inch insulation is standard



- Ample steam space and steam release surface
- Generous furnace volume
- Large primary heating surface



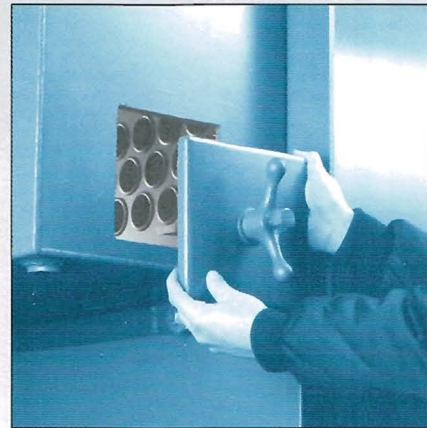
- Built for quick and easy maintenance
- Minimal service costs
- Equipped with premium, packaged, FORCED DRAFT burners



- Wetback for long life and maximum efficiency
- Minimal refractory maintenance
- New box-steel skid with jacking holes
- REAL boiler construction

STANDARD HOT WATER TRIM

- Relief valve(s)
- Water temperature indicator and water pressure indicator
- M.M. 764 low water cutoff, surge baffle and blowdown valve
- Operating temperature control
- High limit temperature control
- High fire temperature control (on sizes 30 HP and over)



- Outstanding inspection accessibility

STANDARD STEAM TRIM

- Safety valve(s)
- Water glass set
- Pressure gauge
- Gauge cock
- Pressuretrol line drain
- Trycocks
- Pressuretrol - high limit safety
- Pressuretrol - operating
- Pressuretrol - high fire control (30 HP and over)
- Float-type low water cutoff and pump control, c/w 1-inch equalizing piping and blowdown valve
- Float-type auxiliary low water cutoff, c/w 2-1/2-inch NPT mounting nipple, surge baffle and blowdown valve

OPTIONS AND ALTERNATIVES

- We specialize in customizing your boiler. The Compak can be equipped to suit a wide variety of installations and specifications. We will help direct you to the most cost-effective models and features.
- Lo NO_x and CO₂ generation models are available.

BOILERSMITH[®]
■ CANADA'S BOILER MAKER ■

Represented by:

P.O. Box 70, 156 Main Street South, Seaforth, Ontario N0K 1W0
Tel: (519) 527-0600 Fax: (519) 527-0150
E-mail: boilers@boilersmith.com www.boilersmith.com

Bulletin No. CAD 1CF3-20-05M-01

Printed in Canada on Recycled Paper

